

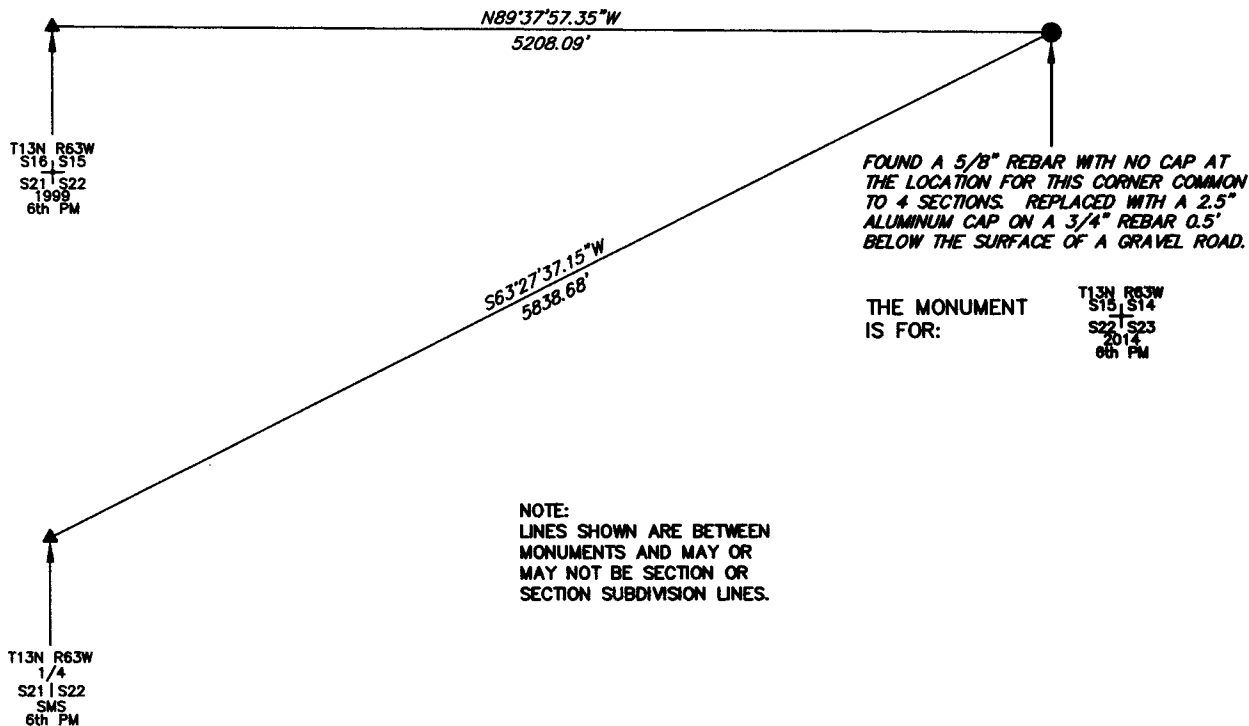
State of Wyoming Corner Record

CORNER PERPETUATION AND FILING ACT,

Regulations of the Board of Registration for Professional Engineers and Land Surveyors.)

Reverse side of this form may be used if more space is needed.

Record of original survey and citation of source of historic information (if corner is lost or obliterated). Description of corner monumentation evidence found and/or monument and accessories established to perpetuate the location of this corner. Sketch of relative location of monument, accessories, and reference points with course and distance to adjacent corner(s) (if determined in this survey). Method and rationale for reestablishment of lost or obliterated corner.



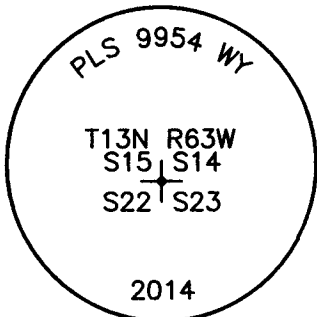
FOUND A 5/8" REBAR WITH NO CAP AT THE LOCATION FOR THIS CORNER COMMON TO 4 SECTIONS. REPLACED WITH A 2.5" ALUMINUM CAP ON A 3/4" REBAR 0.5' BELOW THE SURFACE OF A GRAVEL ROAD.

THE MONUMENT IS FOR:

T13N R63W
S15, S14
S22 | S23
1999
2014
6th PM

NOTE:
LINES SHOWN ARE BETWEEN MONUMENTS AND MAY OR MAY NOT BE SECTION OR SECTION SUBDIVISION LINES.

T13N R63W
1/4
S21 | S22
SMS
6th PM



CORNER MONUMENT SYMBOLS

- RECORD IS FOR THIS CORNER MONUMENT.
- ▲ A RELATED CORNER OR WC MONUMENT.

SCALE 1"=1000'
(EXCEPT IN TRIVIAL CASES)
BEARINGS ARE RELATED TO WGS 84 WITH GPS OBSERVATIONS
DRAWN BY: SM
P.C. B. LOWREY
COUNTY: LARAMIE

THE MONUMENT IS MARKED

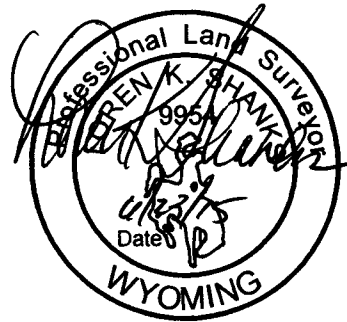
Date of Field Work: 07/26/2014 Office Reference: _____

CROSS INDEX DIAGRAM

A	1	2	3	4	5	6	7	8	9	10	11	12	13	14	15	16	17	18	19	20	21	22	23	24	25
B																									
C		6		5		4		3		2															
D																									
E																									
F																									
G		7		8		9		10		11		12													
H																									
J																									
K																									
L		18		17		16		15		14		13													
M																									
N																									
O																									
P		19		20		21		22		23		24													
Q																									
R																									
S																									
T		30		29		28		27		26		25													
U																									
V																									
W																									
X		31		32		33		34		35		36													
Y																									
Z	1	2	3	4	5	6	7	8	9	10	11	12	13	14	15	16	17	18	19	20	21	22	23	24	25

Firm/Agency, Address
UELS, LLC
85 South 200 East
Vernal, Utah 84078
 Telephone Number: 435-789-1017

This corner record was prepared by me or under my direction and supervision.
SEAL & SIGNATURE



RECP #: 670062
 RECORDED 9/22/2015 AT 10:39 AM BK# 2465 PG# 70
 Debra K. Lathrop, CLERK OF LARAMIE COUNTY, WY PAGE 1 OF 1